

Temporal Variability of Rainfall Amounts and Trend Analysis in the Melloulou Watershed

Bertal Yassine

Ben Brahim Youssef

Department of Geography, Research team” Natural Environments,
Management and socio-spatial dynamics, FLSH Sais Fez,
Sidi Mohamed Ben Abdellah University, Fez, Morocco

Doi: [10.19044/esipreprint.1.2024.p435](https://doi.org/10.19044/esipreprint.1.2024.p435)

Approved: 16 January 2024

Posted: 19 January 2024

Copyright 2024 Author(s)

Under Creative Commons CC-BY 4.0

OPEN ACCESS

Cite As:

Yassine B. & Youssef B.B. (2024). *Temporal Variability of Rainfall Amounts and Trend Analysis in the Melloulou Watershed*. ESI Preprints.

<https://doi.org/10.19044/esipreprint.1.2024.p435>

Abstract

The present study consists in analyzing the temporal variability of rainfall and rainfall trend a statistical analysis of rainfall data in the Melloulou watershed for a half-century chronicle (1970-2020). The objective of this study is to extract all the rainfall characteristics of this period, to extract the rainfall variability and to determine the rainfall trends. The working method is based on a statistical approach to detect the climatic characteristics of the Melloulou basin. The study of the standardized precipitation index (SPI) and the rainfall deficit index (IDF) showed the alternation of very long dry periods with wet periods. The Mann-Kendall test under the RStudio also showed a decreasing rainfall trend.

Keywords: Climate variability, trend, SPI, IDF, Melloulou Basin

Introduction

Climate variability is a global climate phenomenon that affects many countries in the world according to the work of the Intergovernmental Panel on Climate Change (IPCC, 2013). The increase in the frequency of the occurrence of weather extremes has been identified as a major global environmental concern. The significant societal, ecological, and economic consequences of the climate extremes such as dry spells, and everywhere in

the world (Kaur, 2022). Since the early 1980s, the southern shore of the Mediterranean has experienced a series of dry years (Zamrane Z, 2016). Morocco is currently experiencing the longest dry period in its modern history, characterized by a decrease in precipitation and a clear upward trend in temperatures (Driouech F, et al 2010). During the last decades, the extension of dry episodes has become a structural in the Mediterranean, including Morocco (Sebbar A, et al 2013). The climate of the latter is predominantly semi-arid hot, dry summers, occasional droughts, and mild, relatively wet winters (Critchfield H.J, 1983).

The Melloulou watershed that we will study is part of this Mediterranean area, located in the northern Middle Atlas and in the southwestern part of the Guercif plain. It occupies an area of 2589 km². The climate of this area is marked by seasonal thermal contrasts and very clear irregularities in rainfall. As a result, it knows frequent periods of drought that have directly impacted the forest and soil formations. Also, the precipitation is a fundamental component of the climate and changes in its patterns can have large implications for human health, ecosystems, plants, and animal in general and in particular (Chakraborty, D. 2022).

In this variable and rainy climatic context, the present study has set itself the objective of using complete and homogeneous meteorological series in order to analyze the rainfall trend on an annual, seasonal and monthly scale in the Melloulou watershed. For this purpose, a statistical approach was adopted to allow a chronological analysis of this climatic phenomenon.

A correct climatic analysis requires the use of complete and homogeneous weather series (Fратиanni S et al., 2010). This analysis allows us to identify the rainfall trend at the scale of the Melloulou watershed.

1. Materials and methods

1.1 Location of the study area

Our study area is drained by the Oued Melloulou which represents one of the main tributaries of the left bank of the Moulouya whose confluence with the latter is located near the city of Guercif. The watershed of Oued Melloulou is located in the Eastern Middle Atlas, it covers for an area of 2589 km². Oued Melloulou covers a distance of about 100 km from its source, located on Lake Tameda, to its confluence with the Moulouya in Guercif (Mabrouki Y, et al 2017). The Melloulou watershed extends, in a triangular shape (Mouhdi, 1993), from SW to NE bounded by latitudes 33°32'N, 34°13'N and longitudes 3°22'W, 4°15'W, and opens onto the northern part of eastern Morocco. It is bounded to the north and northwest by the Inaouène watershed (tributary of Oued Sebou). To the west by the basin of the upper Sebou and southeast by the basin of the middle Moulouya. It is

characterized by a highly variable topography ranging from the plains of the Northeast (plain of Guercif) to the high peaks of the northern Middle Atlas. Administratively, the Oued Melloulou watershed is shared by the territorial division between the provinces of Guercif (157595.41 ha), Taza (94281.50 ha), Sefrou (6548.46 ha) and Boulmane (659.05 ha), respectively 60.82%, 36.39%, 2.52% and 0.25% of the total area of the basin (DPEF GUERCIF).

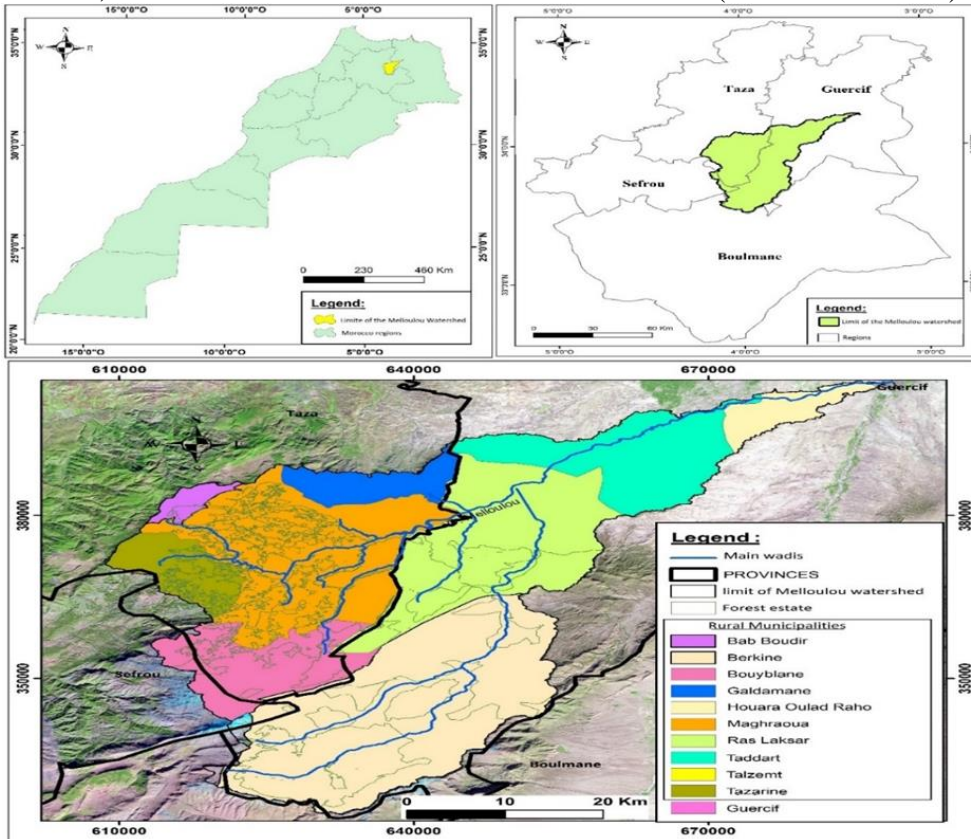


Fig. 1. The geographical location of the Melloulou watershed

1.2 Data

The study of climate and its variability is based on the annual rainfall series recorded at three stations located in the Melloulou basin (Tab. 1). The data come from the Moulouya Water Basin Agency (ABHM) and the Provincial Directorate of Water and Forests in Guercif (DPEF). They are of variable quality. Among the stations located in the study area, three stations were selected whose coordinates and characteristics are shown in Table 1:

Stations and coordinates	Duration of observations	Longitude	Latitude	Altitude (m)
Belfarah	1970- 2020	657000	391200	600
Berkine	1970- 2020	647900	354900	1000
Guercif	1970- 2020	689000	404400	332

Tab. 1. The coordinates of the stations retained in the Melloulou watershed

1.3 Methodology

The study of the temporal variability of rainfall and the measurement of its trend requires the acquisition of a long series of reliable rainfall data. The reference period is from 1970 to 2020. To define the statistical characteristics of the chronicle studied (1970 - 2020) of the stations of Berkine, Belfarah and Guercif, we have a series of statistical tests have been applied to identify the different variations of rainfall, and also to extract information on the climatic characteristics that the study area has experienced. Our choice of stations was based on two criteria: complete observation series and a relatively homogeneous spatial distribution of stations. To carry out this study on the rainfall recorded at the three stations at the annual, seasonal and monthly scales, we applied the following approach:

➤ Initially, we made a purely statistical study of rainfall to determine the characteristics of the variation in rainfall amounts and to analyze the frequencies of annual rainfall.

➤ Next, we calculated the Standardized Precipitation Index, which is called in English ‘Standardized Precipitation Index’ (SPI) created by Mckee et al (1993) to determine wet and dry periods. This standardized rainfall index (SPI) reflects either the rainfall surplus or deficit for the year under consideration in comparison with the average rainfall of the study period (ABDOU et al, 2008). It is expressed by the following formula:

$$SPI = \frac{(Xi - Xm)}{Si}$$

Where:

X_i : is the cumulative rainfall for a year i ;

X_m : is the average rainfall observed for a given series;

S_i : is the standard deviation of annual rainfall for a given series.

➤ Thirdly, the use of rainfall deficit index (RDI) allows to identify and calculate the percentage of the number of deficit years. The positive value indicates a wet year and the negative value indicates a dry year. It is expressed by the following formula:

$$RDI (\%) = ((P_i - P_m) / P_m) * 100$$

Where:

RDI: Rainfall Deficit Index (in percent);

Pi: Annual precipitation (in mm);

Pm: Average precipitation (in mm).

➤ The final phase of this approach was reserved for the analysis and verification of rainfall trends, by applying the Mann-Kendall test using the RSTUDIO software. This test, is commonly used to detect monotonic trends in a series of environmental, climatic and hydrological data (POHLERT, 2018). The Mann-Kendall test is defined as follows:

$$S = \sum_{i=1}^{n-1} \sum_{j=i+1}^n \text{sig}(X_j - X_i),$$

$$\text{sgn}(X_j - X_i) = \begin{cases} +1 & \text{if } (X_j - X_i) > 0 \\ 0 & \text{if } (X_j - X_i) = 0 \\ -1 & \text{if } (X_j - X_i) < 0, \end{cases}$$

A positive value of S indicates that there is an increasing trend and vice versa (Yadav, 2014). The S statistic is approximately a normal distribution when $n > 0$. The mean of S is zero and the variance can be calculated as follows:

$$\text{Var}(S) = \frac{1}{18} \left[n(n-1)(2n+5) - \sum_{i=1}^m t_i(t_i-1)(2t_i+5) \right]$$

Where ‘n’ is the number of data in the series under study, ‘m’ is the number of related groups and ‘ti’ is the number of data in the group of order ‘I’. (Sintayehu A, D et al 2021).

The presence of a significant trend is assessed by applying the following formula:

$$Z = \begin{cases} \frac{S-1}{\sqrt{\text{VAR}(S)}} & \text{if } S > 0 \\ 0 & \text{if } S = 0 \\ \frac{S+1}{\sqrt{\text{VAR}(S)}} & \text{if } S < 0. \end{cases}$$

Zero values of Z indicate no trend while positive values of Z indicate increasing trends and negative values of Z indicate decreasing trends.

2. Results

2.1 Analysis of annual rainfall

The annual rainfall in the Melloulou watershed is low in terms of quantities. They have limited between 50.20 mm recorded in 1971 in Belfarah and 442 mm recorded in 200 in Berkine (Fig 2). They have experienced a variability of about 300 mm.

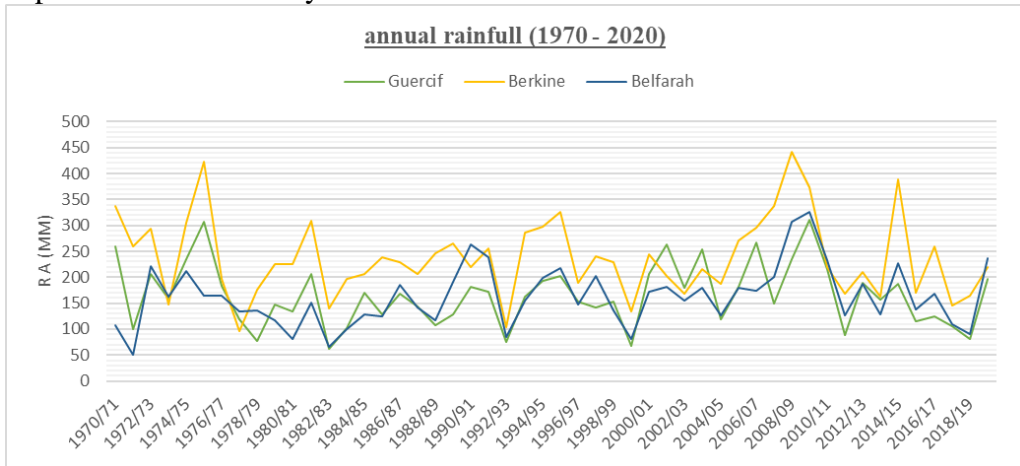
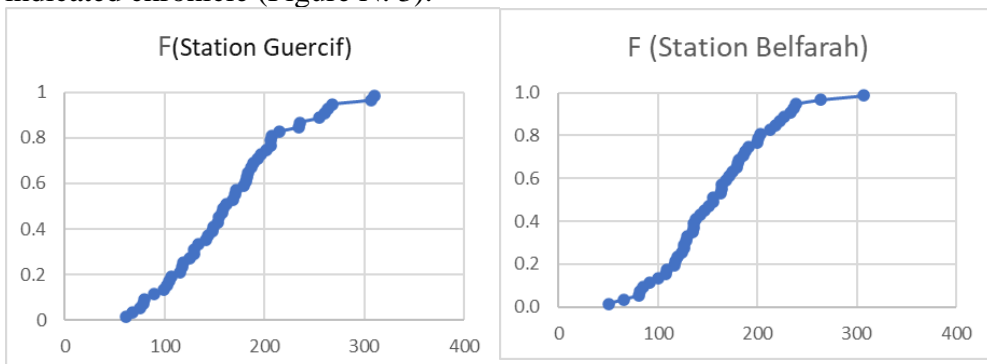


Fig 2. Annual Rainfall in the Melloulou Watershed

2.2 Frequency Analysis of Precipitation

The frequency analysis is a statistical method that allows us to designate different climatic states (dry, wet ...) during the studied chronicle. The frequency analysis of the annual rainfall amounts for the period 1970-2020 allows us to determine the distribution of these amounts during the indicated chronicle (Figure N. 3).



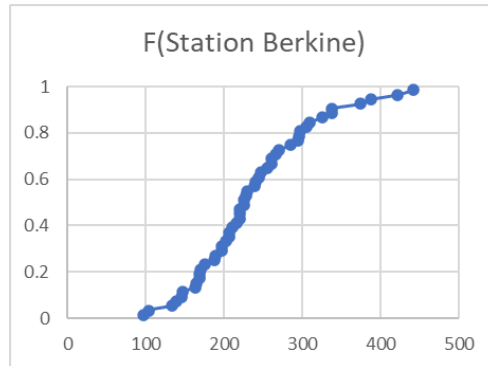


Fig. 3. Frequency Analysis of Precipitation

The analysis of rainfall amounts allows us to divide the years into four classes:

- ✓ Years with a frequency of less than 0.25: are considered dry years
- ✓ Years with a limited frequency between 0.25-0.75: are moderate years
- ✓ Frequency years between 0.75-0.90: represent wet years
- ✓ Years with frequency greater than 0.90: are obviously very wet years

From the results obtained (Tab.2), we can see that there is a great homogeneity between the measuring stations and a perfect equality of dry, moderate, wet and very wet periods in the Melloulou basin, this means that these three stations are subject to the same climatic factors.

Classes	Frequency	Station Guercif	Station Belfarah	Station Berkine
Dry year	$F < 0.25$	13	13	13
Moderate year	$0.25 < F < 0.75$	25	25	25
Wet year	$0.75 < F < 0.90$	7	7	7
Very wet year	$F > 0.90$	5	5	5

Tab. 2. Frequency Analysis of Annual Precipitation (1970-2020)

2.3 Analysis of Monthly Rainfall

The purpose of the study of the monthly rainfall regime is to understand the distribution of rainfall during the year in the Melloulou watershed.

We based our study on the 50-year averages observed in the stations of Guercif, Belfarah and Berkine. From figure n°4, we can say that the average monthly precipitation decreases from upstream to downstream. The wet period begins in September in the station of Berkine and in October in the station of Guercif and Belfarah and lasts until May. The months of February, March and April record the maximum values with monthly averages of about 71 mm, 68 mm and 87 mm. Then, the minimum monthly

averages are recorded in July 1.5 mm in Guercif and Belfarah and 7.29 mm in Berkine. The summer months receive significant rainfall, this corresponds to stormy rains during the summer period.

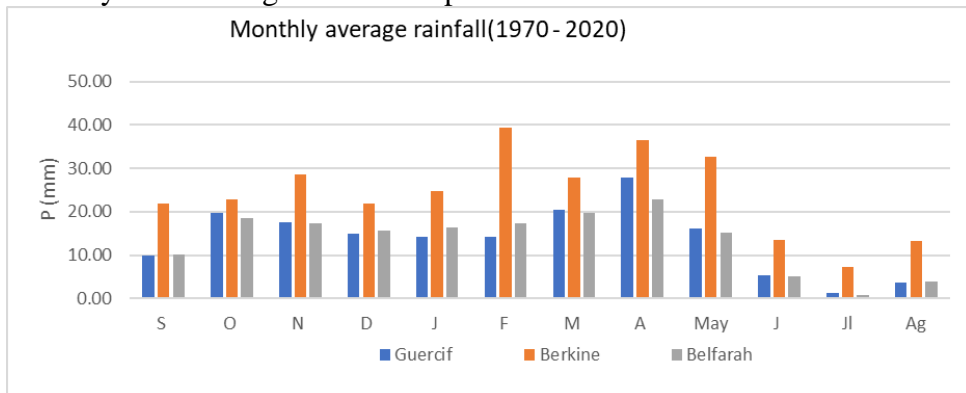


Fig.4. Average Monthly Rainfall

2.4 Seasonal Rainfall

Seasonally, rainfall is concentrated in spring (March, April and May) with an average of 64.48 mm in Guercif, 97.07 mm in Berkine and 57.63 mm in Belfarah during the period from 1970 to 2020. Winter and autumn are more or less wet, with a slight difference in seasonal averages, while summer is relatively dry (Fig. 5).

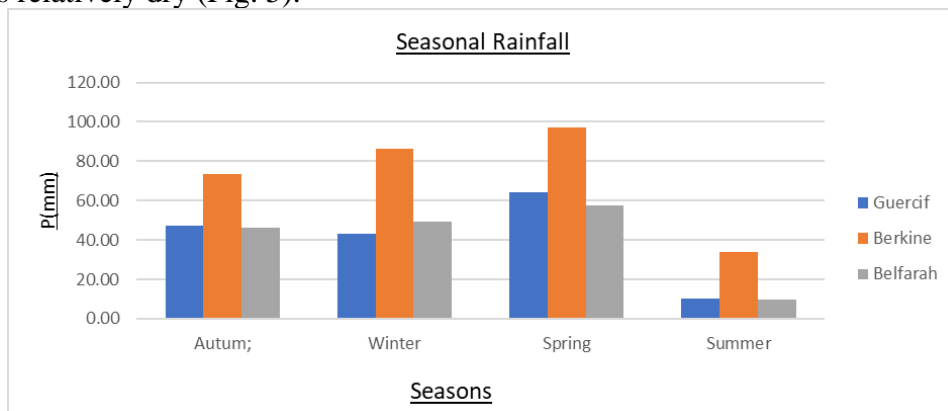


Fig. 5. Average seasonal rainfall from 1970 to 2020

2.5 Standardized Precipitation Index (SPI)

The advantage of the SPI index is its adaptation to different periods of time, and allows for early detection of drought situations (Bouly S, et al, 2020). The statistical analysis and the calculation of the SPI were carried out on the cumulative rainfall of the agricultural year. This index defines the severity of the drought. Negative annual values indicate drought compared to the reference period, and positive values indicate wet conditions. The results

obtained from the calculation of the standardized rainfall index in the Melloulou watershed are:

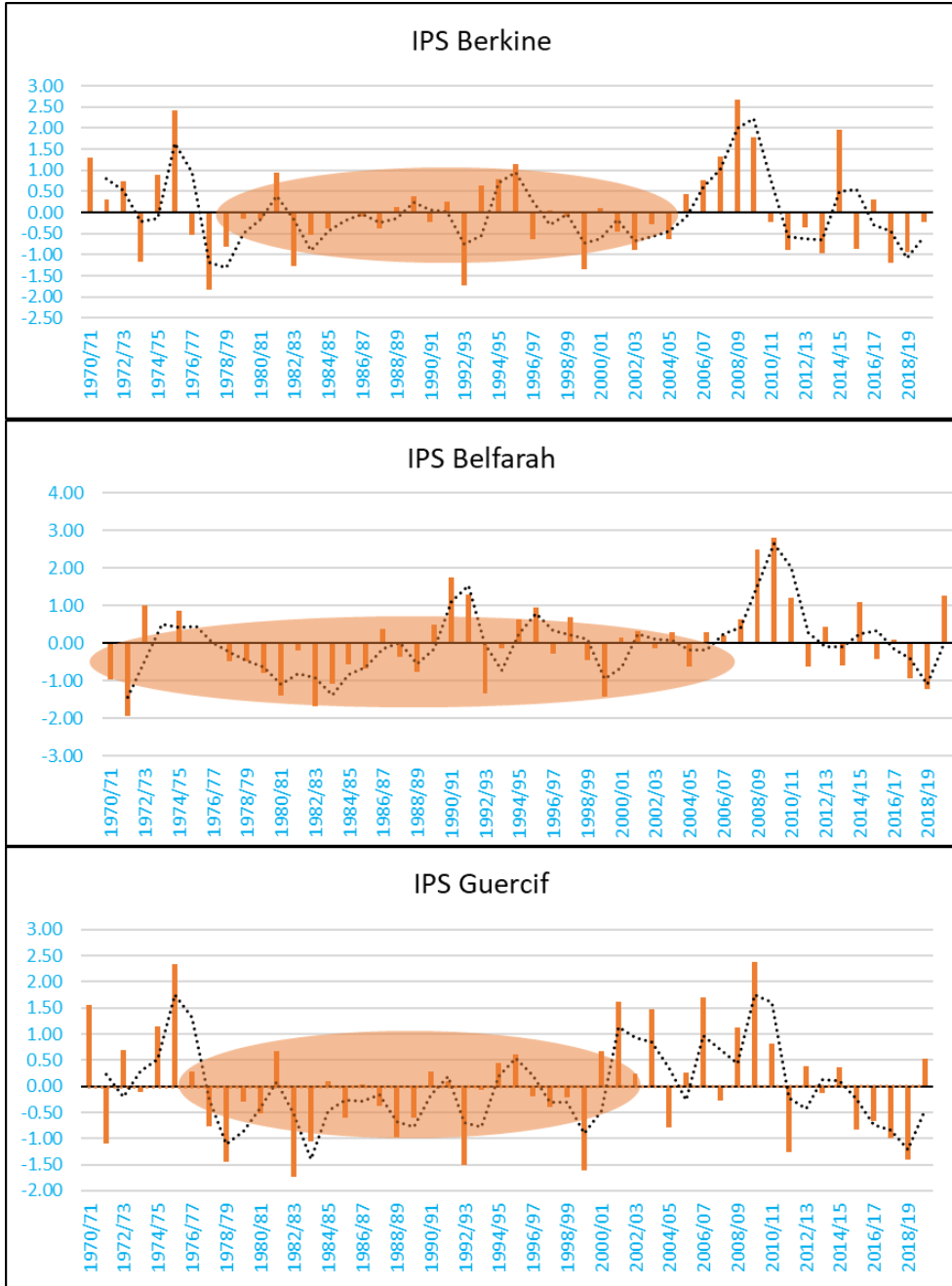


Fig.6. SPI results in the watershed Melloulou

According to the results of the graph No. 6, we observe a general downward trend in rainfall from the year 1970 to the year 2007 in the station

of Belfarah, from the year 1976 to 2007 in the station of Berkine and from the year 1976 to 2001 in the station of Guercif.

From figure n°6 and table n°3, we can conclude that the moderate and ordinary period are the most frequented in the watershed of Melloulou, with a rate of 71%. While the wet period knows a decrease in the number, with a rate of about 15% and the dry period almost the same order with a rate of 14%. The application of the method of moving averages for the trend of the SPI reveals oscillations of the SPI whose magnitude and duration are very variable.

Period	Station		
	Berkine	Belfarah	Guercif
Extreme humidity	2	2	2
High humidity	5	6	6
Moderate humidity	15	17	16
Ordinary drought	22	18	18
Severe drought	6	7	8
Very severe drought	0	0	0

Tab.3. The Frequency of the Periods in the BV of Melloulou

2.6 Rainfall Deficit Index

The rainfall deficit index was used to estimate the variation in rainfall in relation to the average. The average of the highest rainfall deficit of the 1970-2020 series studied is recorded at the station of Belfarah with an estimated value of -69.13%. Then, the station of Guercif with a deficit of -63.11%, and the station of Berkine recorded a deficit of -59.07%. The station of Belfarah has experienced the longest duration of rainfall deficit from 1977/1978 to 1985/1986 with a maximum rate of -59.48%. The rainfall deficit of the station of Berkine is recorded during five years only with a maximum rate of -59.07%. At the station of Guercif, this time, the rainfall deficit is spread over four years only. Then, for the rainfall abundance for the series 1970-2020 is observed in the station of Belfarah with a rate that exceeds 100% for the year 2009/2010. Then, in the second level, the station of Guercif with a rate of 87.34%. Finally, the station of Berkine with a rainfall abundance with a value of about 86.36%.

2.7. Trend Analysis

According to the application of the Mann Kendall Test for the series extending from 1970 to 2020, it emerges that the Guercif and Berkine station records a downward trend, While the station of Belfarah records a negative trend. The results obtained via the Mann-Kendall Test are presented in the following table:

Station	Period	Average (mm)	Mann Kendall Test	
			S value	Z value
Guercif	1970-2020	165	0.0	-0,56
Belfarah	1970-2020	163	1.1	1.77
Berkine	1970-2020	237	-0.42	-0,61

Tab.4. Results of the Mann-Kendall Test

3. Discussion

Annual precipitation in the Middle Atlas Mountains region is characterized by high variability (Sebbar A et al, 2020). The study of this climatic variability and trend are based on the history of rainfall. The climatic conditions of the Melloulou watershed are characterized by rainfall concentrated on the spring season. Fluctuations in rainfall amounts are severe. Some years are very deficient in rainfall, while others are surplus.

The use of certain indices has shown a trend of decreasing rainfall during the period 1970-2020. The impacts of this decrease in rainfall have been materialized by the decrease in the flow of water sources, as well as the flow of wadis, the cereal production recorded a drop during the last years. The regression of the forest surfaces that it is at the level of quantity and quality. This downward trend in rainfall can be linked to the decrease in the frequency of disturbances in the north and west.

The frequency analysis of rainfall and the standardized rainfall index (IPS) and the rainfall deficit index (IDP) revealed that the Melloulou watershed has experienced rainfall deficits in different years in the three stations (GUERCIF, BELFARAH and BEKINE). Although the rainfall decline has intensified in different areas, namely the area of Tamgilt that has experienced a decline in the flow of water sources and at the level of grain production. It noted an increase in rainfall in other areas and even on different years.

The results derived from the indices applied to the Melloulou basin show that it alternates between dry and wet periods lasting from 4 to 5 years. In addition, the evolution of SPI and PDI values of the different stations show that the climatic domain of the Melloulou basin is a domain of nuance.

According to the Mann-Kendall test, a negative trend in precipitation will result in a decrease in the number of rainy days and an increase in the duration of dry periods.

Conclusion

The purpose of this document is to provide a summary of climate variability and its trend over the last five decades (1970 – 2020). The indices were calculated based on monthly, seasonal and annual rainfall data.

The climatic study of the Melloulou watershed, through indices (ISP and IDF) and the Mann-Kendall test has allowed us to show the differences in duration between the years characterized by a water deficit and those characterized by a water excess.

The Melloulou basin thus experiences alternating wet and dry phases. The Mann-Kendall test confirms an upward trend in the station of Belfarah and downward in both stations (Berkine and Guercif). The latter is evidenced by a reduction in the amount of rainfall, and slowdown of natural resources and human activities.

Acknowledgements:

I would like to express my sincere thanks and gratitude to my supervisor, Professor Youssef Benbrahim, and to Professor Ahmed Bertal for reviewing this article.

Conflict of interest: The authors have declared no conflict of interest.

Data availability: All data are included in the article content of the article.

Funding statement: The authors obtained no funding for this research.

References:

1. Abdou, Ali. Thierry L. and Abou, A. (2008): meaning and use of the rainfall index in the Sahel. *Drought* 2008; 19(4): 227-35.
2. ABHM: Agency of the Moulouya hydraulic basin.
3. Bouly S. Cisse, A. Faye, C. and Sane, T. (2020): Use of the standardized precipitation and evapotranspiration index (SPEI) from 1950 to 2018 to characterize the drought trend over the Lower Casamance. *Journal Geographic Space and Moroccan Society* n°32, February 2020. 27p.
4. Chakraborty, D. Ajaykumar, K. Baby, V.S. Singh, N. Singh, H.D. Singh, H.J. and Sethy, B.K (2022): Trends in monsoon rainfall extremes over Andhra Pradesh and Telangana. *Journal of agrometeorology*. 24(3):295-298. <https://doi.org/10.54386/jam.v24i3.1665>.
5. Critchfield H.J., (1983): *General climatology*, 4th edn. Prentice-Hall, Englewood Cliffs, 453 pp.
6. DPEF: Provincial Directorate of Water and Forests in Guercif.
7. DREFLCD-Nord-Est: Regional Directorate of Water and Forests and the Fight against Desertification in the North-East.
8. Driouech Fatima, (2010): Winter precipitation distribution over Morocco under climate change: downscaling and uncertainties.

- Doctoral thesis at the National Polytechnic Institute of Toulouse (INP Toulouse). 164 p.
9. IPCC, 2013: Intergovernmental Panel on Climate Change.
 10. Kaur, B. Kaur, N. Kumar Kataria, S. and Singh, S. (2022). Assessing the variability in temperature and rainfall extremes using RClimdex in Jalandhar district of Punjab. *J. Agrometeorology.*, 24: 437-439.
 11. Mabrouki Y. Taybi, F.A. and Berrahou, A. (2017): Spatiotemporal evolution of the quality of running waters of Oued Melloulou (Morocco). *Journal of water sciences*. Volume 30. Number 3, 2017. 14p.
 12. Mckee T. B and al (1993): The relationship of drought frequency and duration to time scales, in: 8th conference on Applied climatology. Am. Meteorol. Soc. Boston, 179-184.
 13. Mouhdi A, (1993): Contribution to the pluvio-hydrological study of the Melloulou watershed (eastern Morocco). Doctoral thesis in geography. University of Sciences and Technologies of Lille U.F.R of geography and spatial planning. p251.
 14. POHLERT T, (2018): Trend: Non-parametric trend tests and change-point detection, R package version 0.0.1. This work is licensed Under a Creative Commons License (CC BY -ND 4.0). 8 p.
 15. Sebbar A, Hsaine, M. Fougrach, H. and Badri, W. (2020) : Impact of climate change on the Middle Atlas Mountains in Morocco. *Proceedings of the AIC Rennes 2020 conference*. 6p.
 16. Sebbar A, Hsaine, M. Fougrach, H. and Badri, W. (2013): Map of annual rainfall in Morocco (1935/2006). 26 th colloquium of the international association of climatology, Cotonou 2013. 8 p.
 17. Sintayehu A, D and al (2021): Precipitation and temperature trend analysis by Mann Kendall test: The case of Addis Ababa methodological station, Addis Ababa, Ethiopia.
 18. Yadav, R. Tripathi, S.K. and Dubey, S.K. (2014): Trend analysis by Mann-Kendall test for precipitation and temperature for thirteen districts of Uttarakhand.
 19. Zamrane Z., (2016): Search for climate variability index in hydroclimatic series in Morocco: Identification, temporal positioning, trends and links with climate fluctuations: The case of the large basins of Moulouya, Sebou and Tensift. PhD thesis. Earth and Water Sciences. University of Montpellier. 197 p.